

# Fascial System and Homoeopathy

To get us started, I want to introduce myself. I come from Stuttgart, Germany, where I work as a orthopedic medical doctor specialized in chronic pain. I run an office of my own.



**Dr. med. Dietrich Wendling**  
Privatpraxis für Alternativen in der Orthopädie

Joomla

Dr. med.  
**Dietrich Wendling**  
Arzt für Orthopädie

Homöopathie  
Akupunktur  
Chirotherapie

Zusatzbezeichnungen:  
Homöopathie, Akupunktur, Chirotherapie, Spezielle Schmerztherapie

Weitere Verfahren:  
Sanfte manualtherapeutische Verfahren  
Körperpsychotherapeutische Verfahren  
[Über diesen Link können Sie mehr über Philosophie und Methoden erfahren.](#)

**So finden Sie uns**  
70173 Stuttgart in  
Alte Poststr. 8 (Zwischen Paulaner und Habitat)  
Tel.: 0711 2269473  
[Über diesen Link können Sie uns eine Mail senden.](#)

My presentation is about an assessment of the myofascial system in order to detect chronic fascial disturbances and mobilize resources against them by homeopathic treatment.

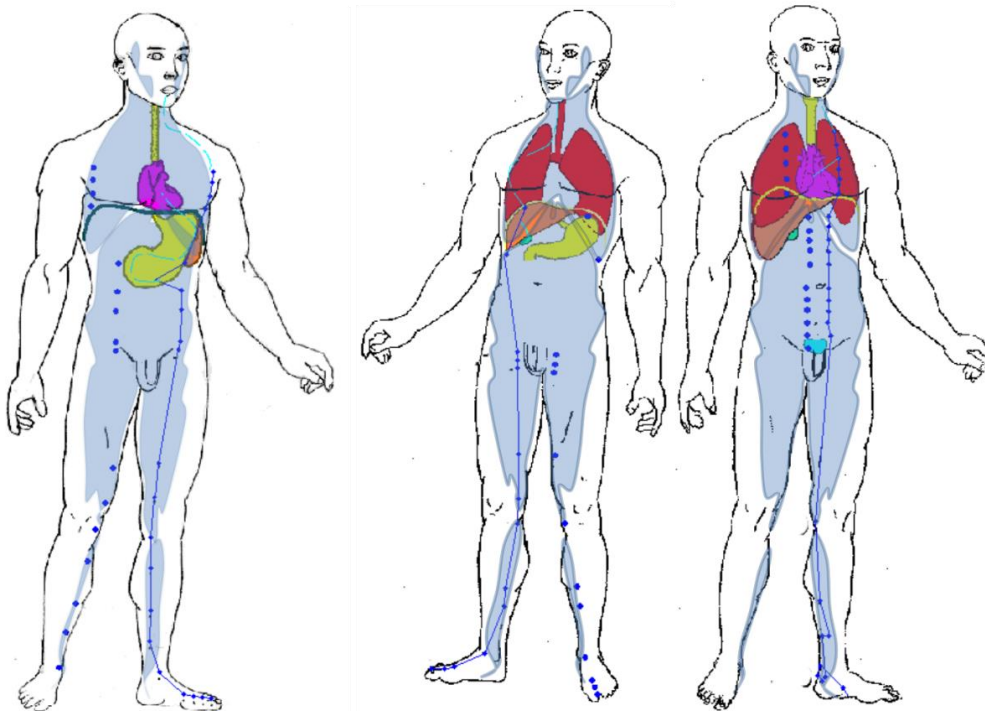
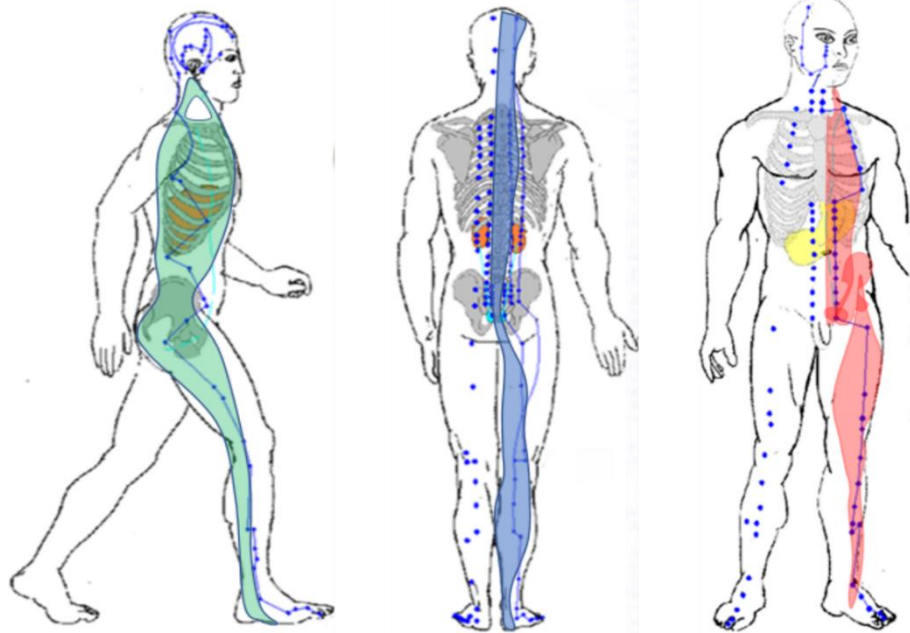
There is a close relationships between the myofascial system and the acupuncture system.

First some remarks about this issue

Secondly an illustration of my assessment including some results

And as a third point an example.

To the first point:  
The course of the myofascial trains and the acupuncture channels are quite similar to each other. They run in longitudinal direction, to each side of the midline.



Both systems are assumed to connect the inner world of the organism with the world around. The fascial system is a delicate perception organ with a lot of free

2

nerve ends while the acupuncture system is thought as a part of a global biotic field forming the body as a subunit. It's called qi.

The polar energies of the qi are yang – the energy we normally regard as such like activity, heat or movement and yin – it is the energy of building structures and recovering them. For a healthy live they should stand in a good relationship.

The acupuncture system is more comprehensive than the myofascial system, because the qi is not limited within the body. The treatment however is related

to the myofascial system in form of needling, exercises, massages and remedies.

The acupuncture system as well as the myofascial system reacts as a whole, so one can use indicator reactions of the muscles or of any part of the superficial fascia to test the whole system :

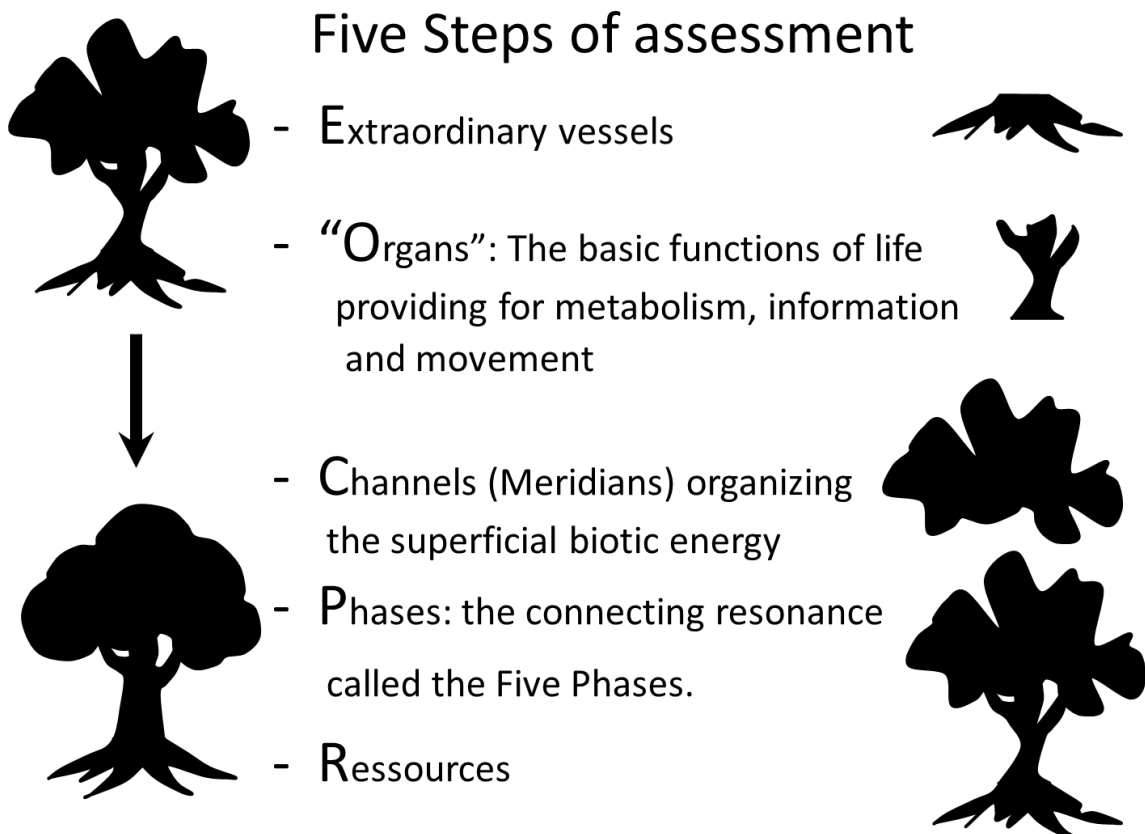
## Dysfunction

- Indicator muscle too weak or too tight (according to Applied kinesiology)
- tightness of the whole fascia

## Regular function respective recovery

- return of normal strength of the indicator muscle
- normal elasticity and tension of the superficial fascia.

3



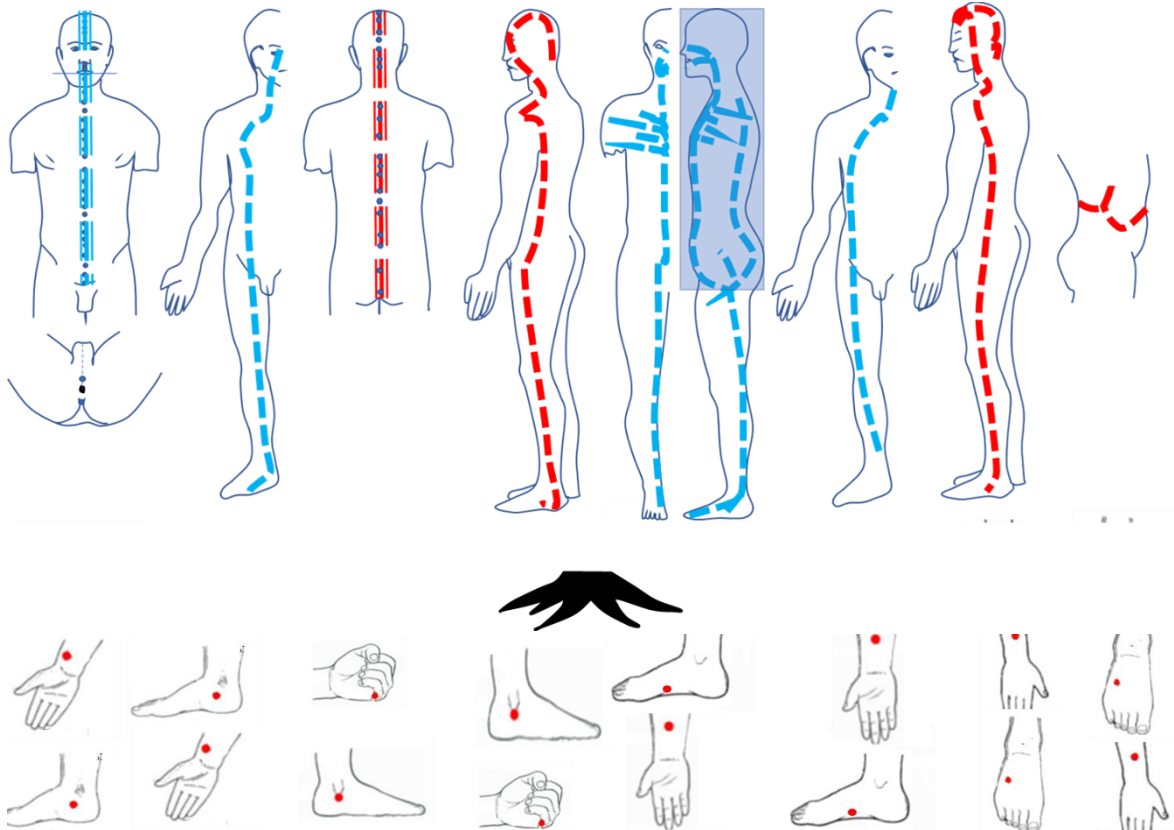
I look for 4 types of disturbances before I check in a fifth step the resources:

- Disturbances in the fundamental system of the eight extraordinary vessels. Comparing the organism with a tree they are the roots.
- Disturbances of the so called "organs". They are basic functions of life providing for metabolism, information and movement. They are the trunk and the branches in the comparison of a tree.
- Disturbances in the superficial biotic energy organized in channels and layers of the surface. These are the leaves of the tree.
- Disturbances in the connecting resonance between all these structures and functions. These are called the Five Phases or Five Elements. They are different mixtures and interferences of Yin and Yang which are represented in all structures and are responsible for the wholeness of the organism.

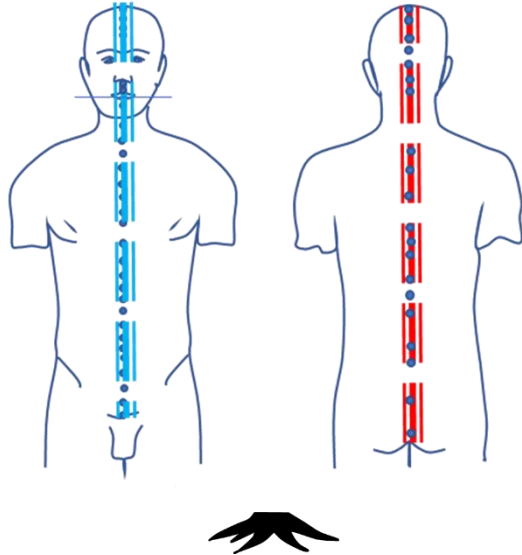
After a differentiated diagnosis of disturbances I activate them all together within a short time. Then I assess the resources of the biotic energy by testing which parts of the system enclose the suitable energy to dissolve the disturbances.

Now I'd like to show more details of my assessment.

4



The fundamentals consist of 8 extraordinary vessels. They derive from the center of the body within the pelvis.



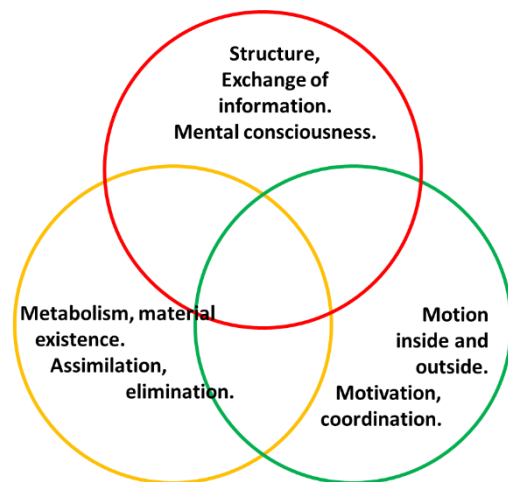
The Vessels of the midline are regarded as Ocean of Yin (Renmai) in the front and Ocean of Yang (Dumai) in the back of the body. They are assumed to flow from the perineum upwards to the vertex. Fundamental Yin-Yang disbalances can be detected by sweeping with a hand along the midline.

If there is an indicator reaction after sweeping upwards the Dumai, it means a fundamental excess of Yang. If one finds an indicator reaction after sweeping down

the Renmai it shows a fundamental deficiency of Yin. The indicator reaction after touching the vertex or touching the perineum (It can be done by the person itself) is also important. Such disturbances must be dissolved first in order to start recovering.

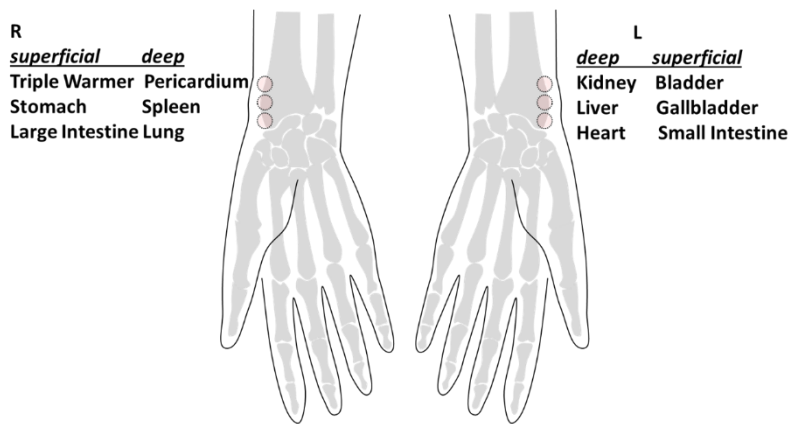
5

The other 6 extraordinary vessels are hidden in the course of the main channels I will explain at once. They can be assessed by stimulating the so-called confluence points which are said to be in resonance to them. Often one finds indicator reactions when there are asymmetries like scoliosis or asymmetries on behalf of a severe accident.



*Basic functions of the three circuits of qi*

The basic biotic functions or “organs” are organized in three circuits of



Projektion zones of the function orbits above the wrist

metabolism, information and movement. They can be assessed by touching corresponding projection zones at the end of the deep fascia. These zones are also known from the traditional pulse

diagnosis. The test will be more sensible in combination with certain stretchings. Testing the circuit of metabolism will achieve more sensibility by

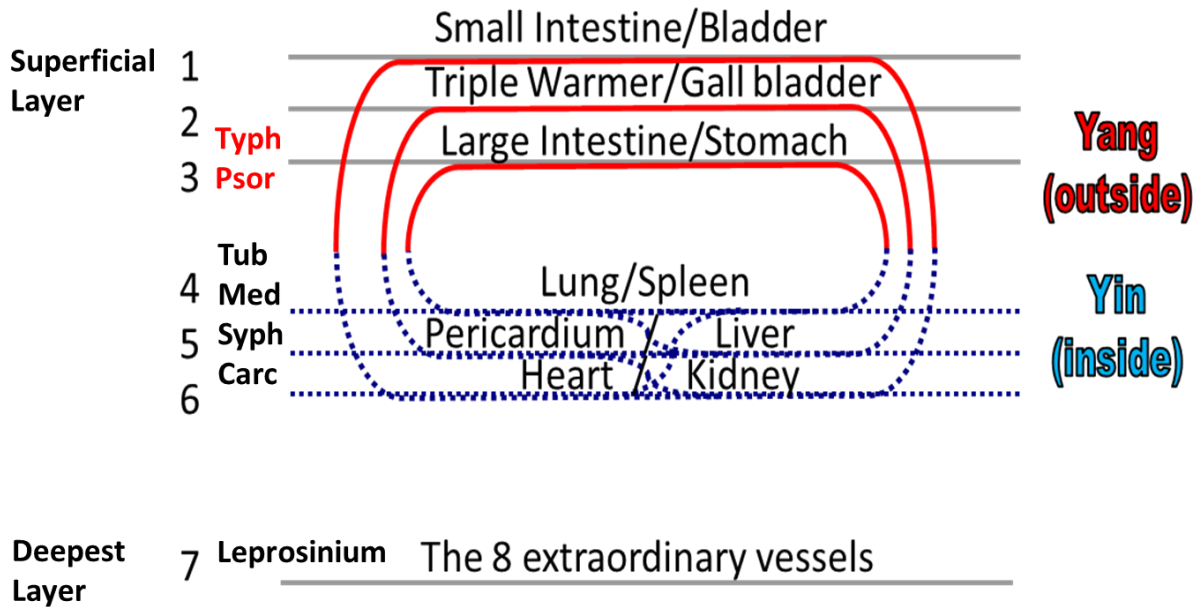
bending forward while the corresponding zones are touched, accordingly the circuit of information by bending backwards and the circuit of motion by twisting the body. In

<b>Nosode</b>	<b>- Function</b>	<b>Nosode</b>	<b>- Function</b>
Tuberculinum	- Lung	Typhus	- Large Intestine
Medorrhinum	- Spleen	Psorinum	- Stomach
Carcinosin	- Kidney	Malaria	- Bladder
Syphilinum	- Liver	Ringworm	- Gallbladder
Leprosinum	- Dumai		

addition the corresponding parts of the extremities should be stretched.

If the first circuit is deficient one often finds a history of individual and also familiar metabolic diseases. The function orbits are called Large Intestine, Lung, Spleen and Stomach. There is often a sensibility against certain nosodes like tuberculinum, medorrhinum, psorinum. In case of deficiency of the second circuit you will find a lot of cancer or at least a sensibility against carcosinum. If the third circuit is affected you may find auto-immune diseases and in many cases a sensibility against syphilinum. These are conditions which can give rise to a lot of diseases. The corresponding symptoms may change or even disappear but those deficiencies will stay until they are cured. They might be an equivalent to what Hahnemann called “Miasms”.

# Depth of Disturbances



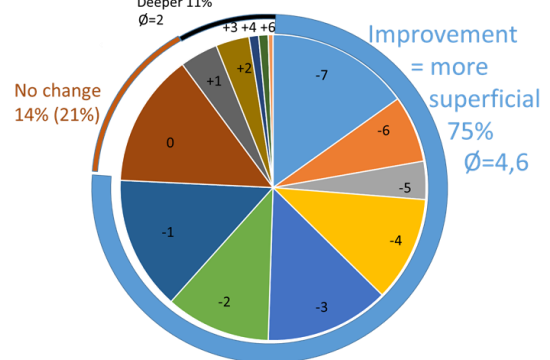
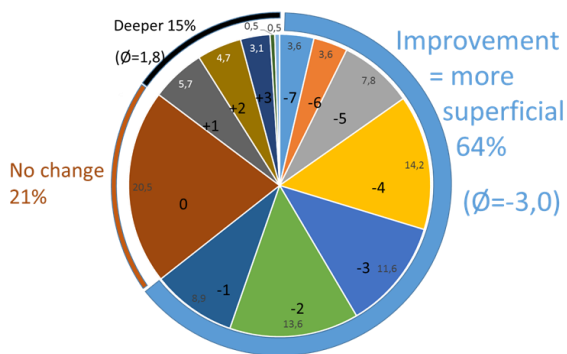
7

## Depth of Disturbances

Changes during homoeopathic treatment of chronic myofascial pain.

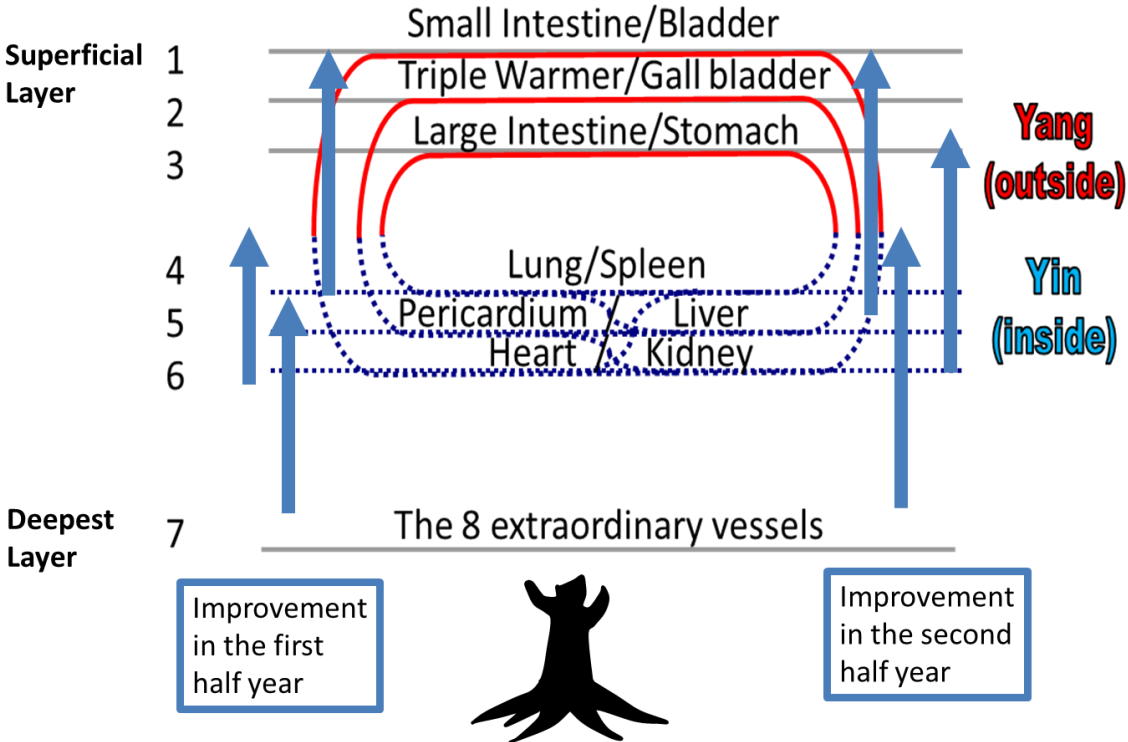
189 cases from April to September 2016

247 cases from October 2016 to April 2017

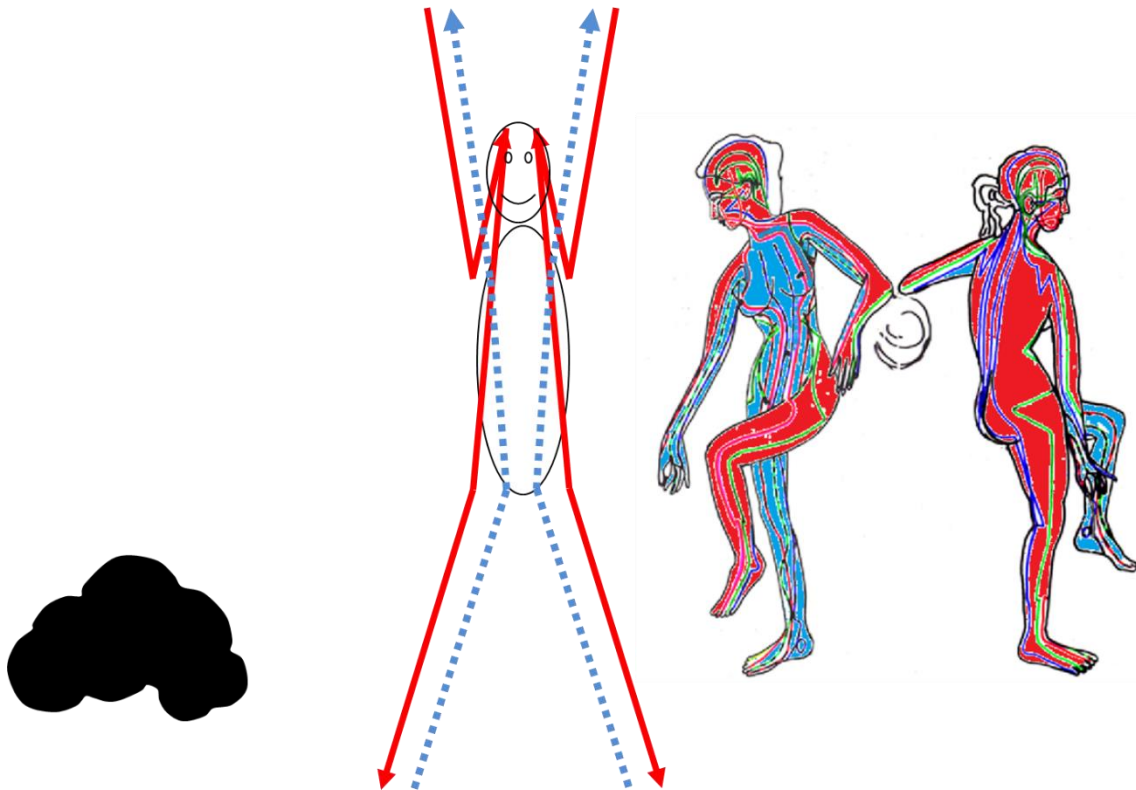


The old Chinese teachings claim that the energy of the organs is circulating in channels and layers of the periphery . The Yang channels expand over the lateral and dorsal aspect of the trunk, the lateral aspect of the extremities and the head, the Yin channels over the ventral side of the trunk and the inner sides of the leg. The Yang Cannels (red colored region) form 3 superficial layers the yin channels 3 deep layers (blue region). The deeper the disturbances are reaching the more severe diseases may arise. So one can gauge the progress of healing by the reduction of disturbances in theses layers. . I summarized my cases of the last year undertaken the illustrated assessment. In the fist half year 64% got an improvement of tree layers in the average. In the second half year 75 % got an improvement of 4.6 layers. So my treatment became more effective in terms of chronic conditions and not only of symptoms.

### Improvement of Disturbances

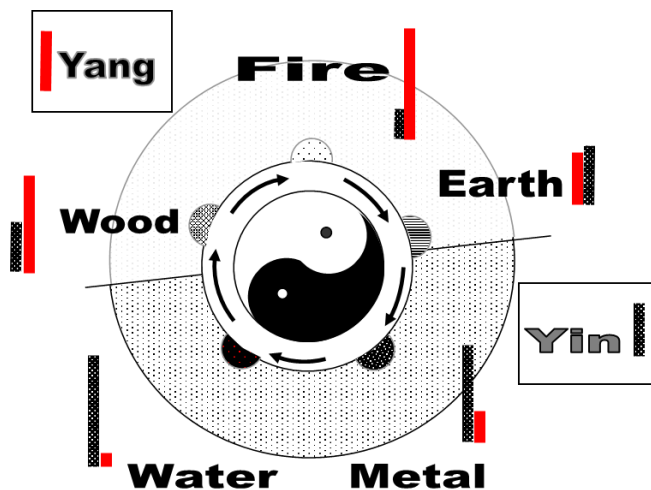






Three more points steps are to be taken for a full assessment . All Yang-channels run from heaven to earth if one raises the hands to the heaven. The Yin-channels run vice versa. On should check them globally in order to detect a general superficial Yin-Yang-disbalance by sweeping in the direction of their flow and against it and detecting the indicator reaction. If there are local complaints you have to check the channels in this region in detail.

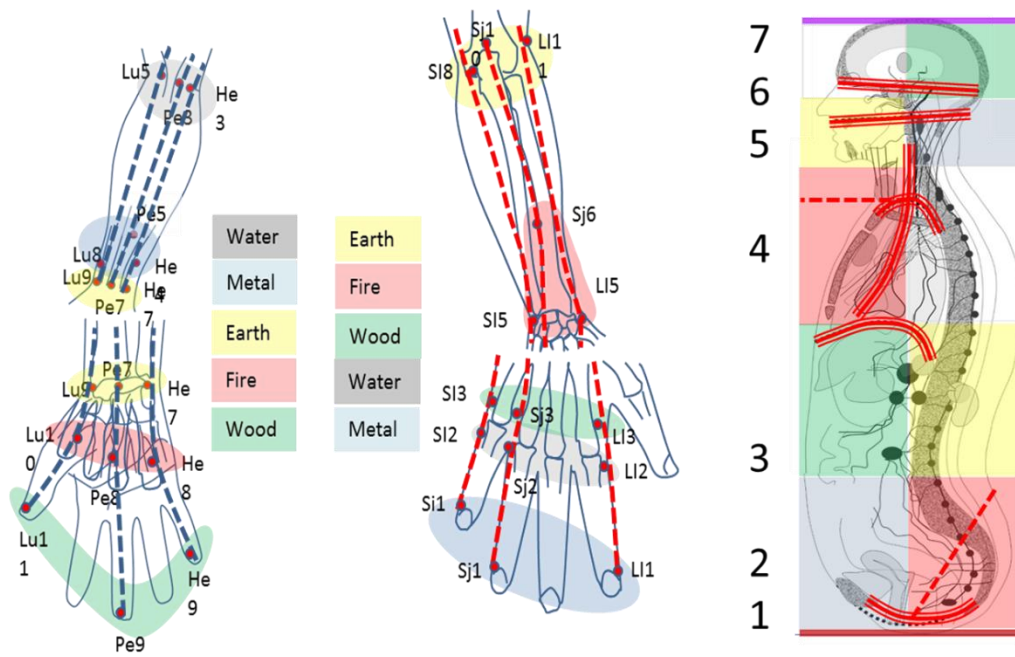
9



## *Five Phases of Change*

The last subunit to be checked for disturbances are the five phases of change. These phases mean different intensities, mixtures and interferences of Yin and Yang at different places, in different materials and at different times. The tradition conveys five stations of the acupuncture channels on the extremities - named ancient points - connected to the five phases. One can use these points to reveal relationships between particular parts or regions of the body and particular phases. I used

them as a key to investigate the relationship between the five phases and the five osteopathic diaphragms.



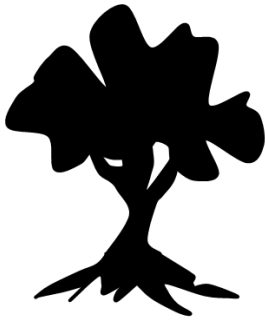
These are mainly transverse structures, perpendicular to the longitudinal structures. „The“ namesake midriff diaphragm is one of them. Like in a house, the diaphragms make up five levels. Some years ago I have published that they are connected to the five phases. One can find also some relationships to the chakras. This might mean that those structures are universal.

10

The last step is the detection of the resources: You have to activate all findings simultaneously by a quick sequence. Afterwards one can check which function orbits or which extraordinary vessels have the potential to dissolve the disturbances.

One can also check which homeopathic remedy is able to do so. If this is the case the myofascial system will normalize at once when the remedy is brought ear to it.

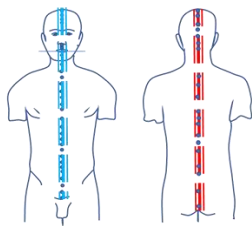
# Ressources



Case: Woman, 57 years,  
 Since six month severe vertigo, < Motion of the head, also  
 when walking.  
 Begin all of a sudden with extreme rotational vertigo  
 diarrhea in the morning  
 heavy panic attacks (anxiety alone)

Findings : Restriction of both TMJ's , blockade C1/2

**Vessels** :Dumai + (Ocean of Yang)  
 Renmai – (Ocean of Yin)  
 Ren1: Indikator reaction  
 (Chakra oft he root)  
 Spleen4: Indikator reaction  
 (Chongmai, Sea of “Blood”))



Findings  
 Restriction of both TMJ's , blockade C1/2

*(Continuation of the first assessment)*

**Functions:** Circuit of Motion  
 (Liver Pericardium Gallbladder TripleWarmer)

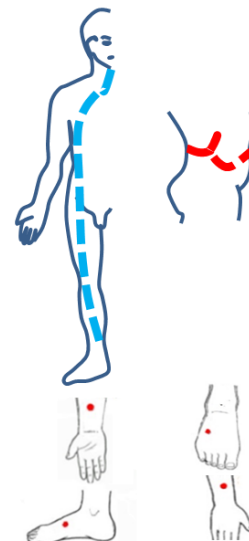
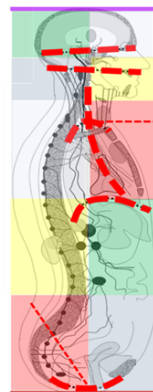
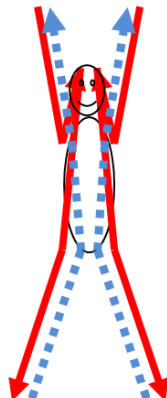
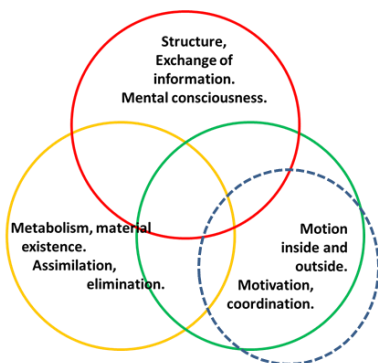
**Channels** :Yang+ Yin-

**Phases** :Indikatorreactions all over the body

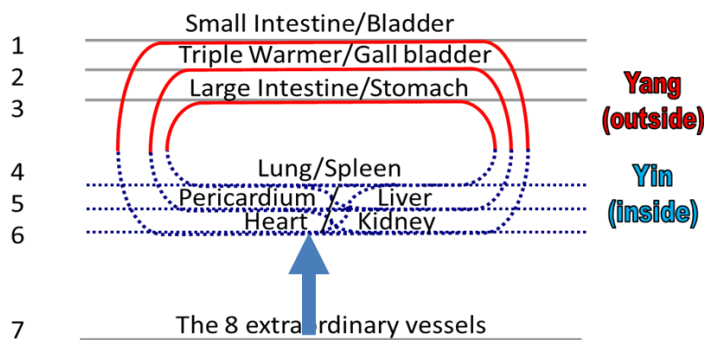
**Ressources:**YinWeiMai

Daimai

==> Erbium sulfuricum C200



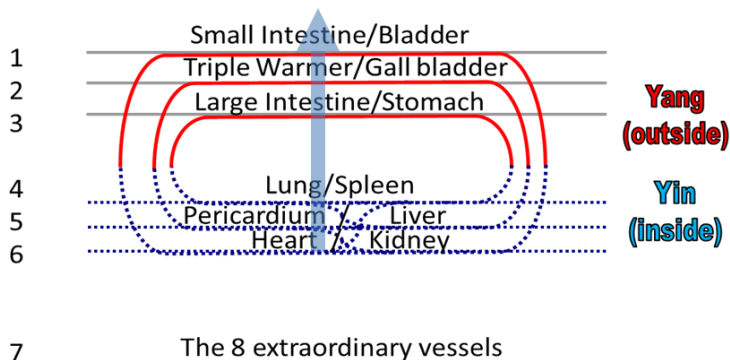
One Week later  
 More anxiety  
 Awakening at midnight, no sleep until morning  
 Less diarrhea



Vessels :0  
 Functions :Circuit of Motion (Liver Pericardium)  
 :Circuit of Information (heart and kidney)  
 Phases :0  
 Channels :0  
 Ressources :Spleen 3 (r), Stomach 36 (l)  
 ==> Calcium carbonicum C200

12

20 days after beginning  
 The first week after Calc 200 was a "descend into hell",  
 but now anxiety no longer always, it stops by itself.  
 Vertigo and tinnitus unchanged.



Vessels :0  
 Functions :0  
 Channels :0  
 Phases :Water (Yin) represented by the zone of the occiput  
 Ressources :Liver 3 (r) and Stomach 36 (l)  
 ==> Gelsemium C200

33 days after begin of the therapy  
More energy of life, diarrhea stopped.  
Vertigo significantly reduced, according the  
specialist caused by the inner ear. Has to  
make special exercises. Some panic attacks,  
but of decreasing strength and frequency.

**Vessels** :0  
**Functions** :0  
**Channels** :Indikatorreaction touching the  
right Triple Warmer channel.  
**Phases** :Indikatorreaction touching the  
sacrum (Fire, Yin)  
**Ressources** :Liver 3 right side,  
Gallbladder 34 left side;

It is crucial to cure fundamental disturbances you can detect by the illustrated myofascial  
assessment.

If you want to learn more , visit my website [dwending.de](http://dwending.de). It provides for free downloads of  
comprehensive descriptions.

If you are interested in a workshop, send me an Email using my website.